

The background of the slide features a faded, artistic image of a mission building, likely Misi3n San Gabriel, with several tall palm trees in the foreground. The sky is a soft, hazy mix of light blue and pink, suggesting a sunset or sunrise. The text is overlaid on this background.

Trends in Indigenous Marriages at Misi3n San Gabriel

By Sophie Weil-Roth, Luka Green,
Erin Puckett, Mart3n Gonzalez,
and Eli Zucker

Outline Page

The background of the slide is a photograph of a large, light-colored building with a tiled roof and several bell towers. The building is surrounded by a green lawn and several tall palm trees. The image is slightly faded to allow the text to be read clearly.

I. Introduction: Nature of the Data

- A. Methods for analysis
- B. Data Cleaning

II. Research Questions

- A. Findings

III. Conclusions

Data Cleaning

- Removal of erroneous data entries
 - Marriages occurring in dates outside the Mission Era
- Improve organization of data frame and make analysis easier
 - Separating Groom Name into two columns: first and last name
- Maintain consistency of data frame entries
 - Making sure all character strings for a given data entry are consistent throughout a given columns i.e 'India' v. 'india'



Validity and Reliability of the Data Set

- Because the data set was collected manually (rather than scraped) several issues of reliability must be addressed
 - Uneven data collection (gaps between years)
 - Limited number of data points
 - Human error

Data collection from mission Friars is also subject to scrutiny



Methods for analysis

- Excel
 - Pivot tables
- R Studio
 - Linear regression models
 - Plots over time
 - Basic statistical analysis
 - P-values
 - R-squared values



What is the frequency of the last name Maria over time?

Grooms are shown in blue, and brides in red

G p-value: .03303: **it is significant!**

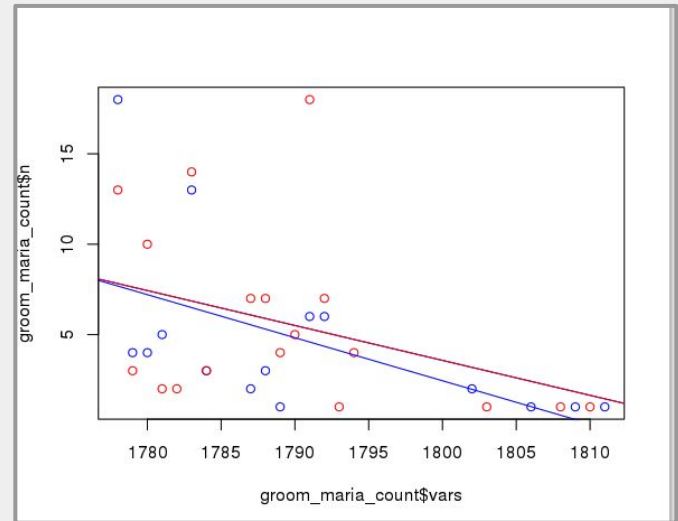
G R^2 : 0.25

G formula: $y = -0.1932x + 351.3096$

B p-value: 0.1029: not significant

B formula: $y = -0.2382x + 431.1299$

B R^2 : 0.09874



Why do we care about the last name Maria?

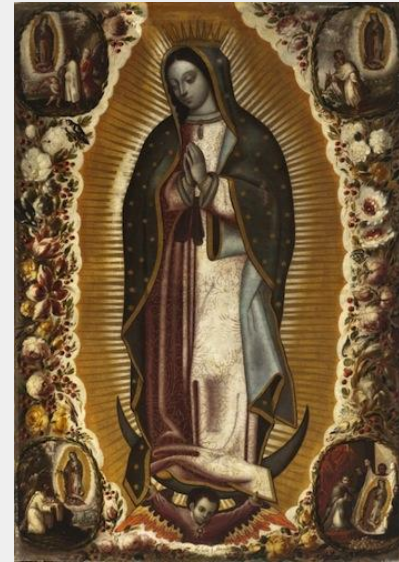
Bernal Díaz de Castillo:

-proliferation of the name Maria

-importance of Maria in conquest



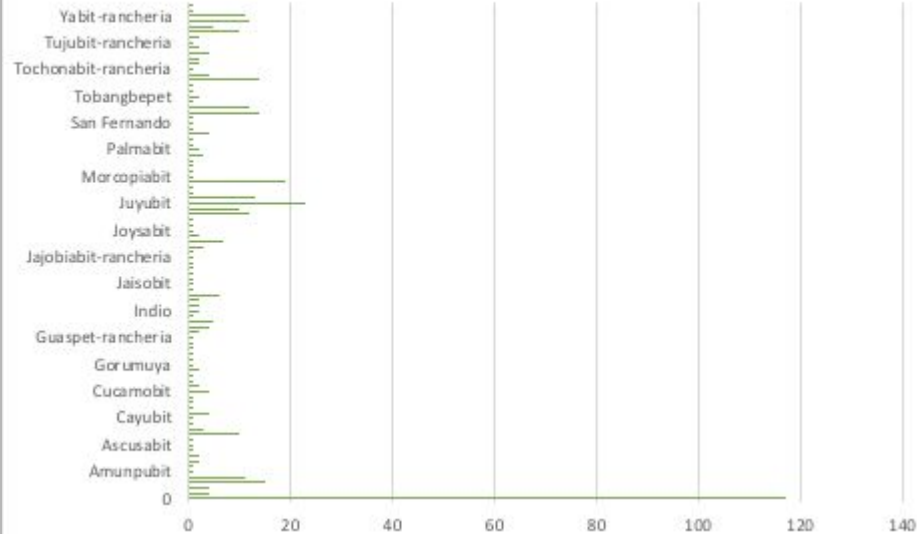
The missionary system as a way to evangelize indigenous people



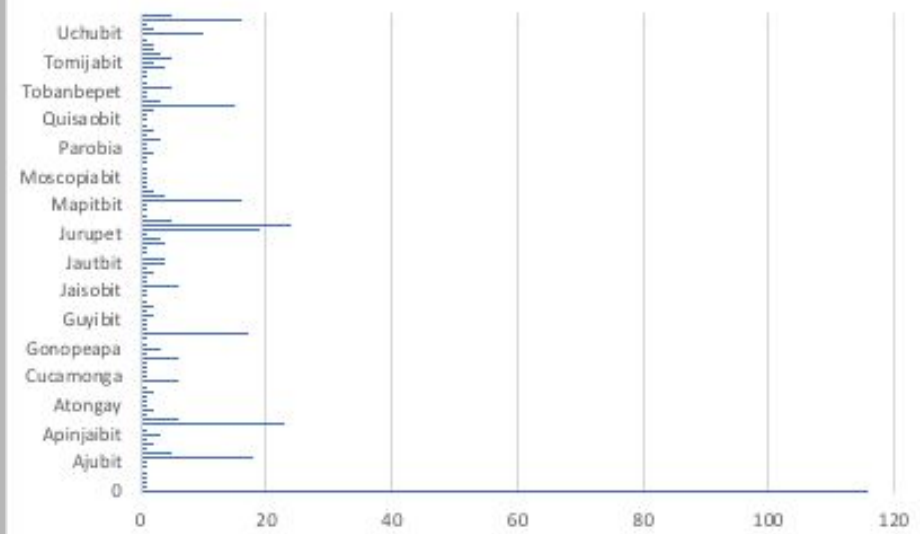
Manuel de Arellano, *Virgin of Guadalupe*, 1691, oil on canvas, 181.45 x 123.38 cm (Los Angeles County Museum of Art)

How many brides/grooms are from a specific origin in Mision San Gabriel?

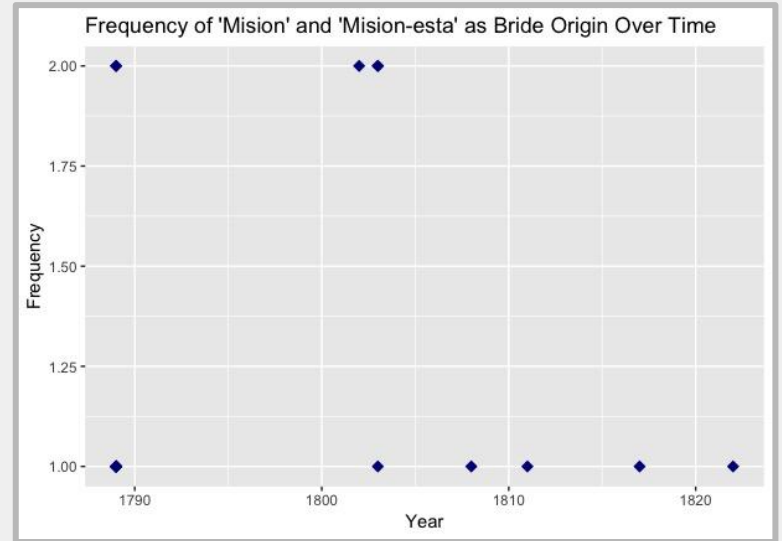
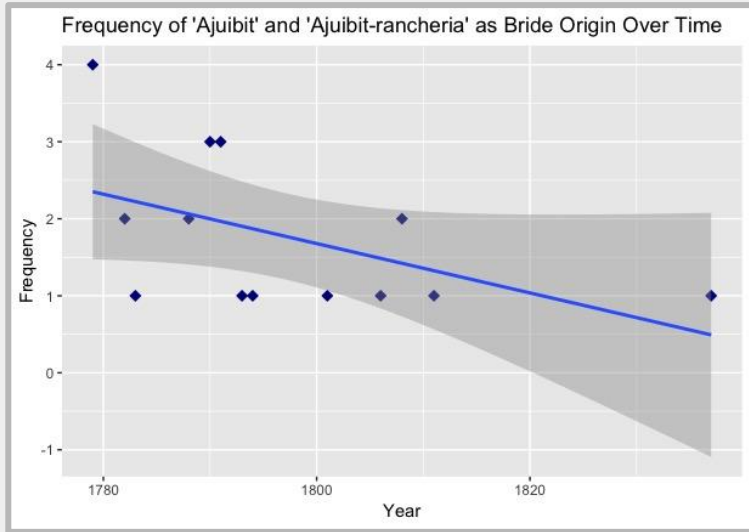
Frequency of Groom Origin



Frequency of Bride Origin



Did the frequency of specific origins of the brides/grooms change over time in Mision San Gabriel?



Most frequently appearing origins:

- "-Rancheria"
- Linear trend or lack thereof

- Time period
- Lack of data
- Conclusions

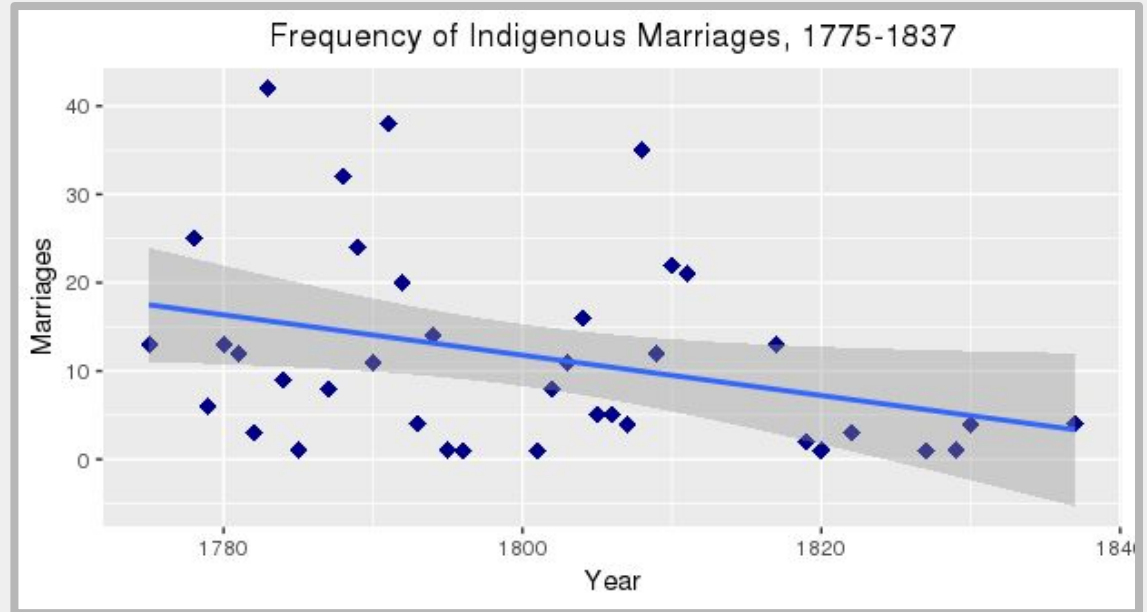
How many marriages occurred among the same indigenous tribes?

Tribe	Number of Marriages
Ajuibit	7
Sibapet	2
Jutucubit	2
Yabit	1
Juyubit	7
Mision	13
Gunibit	1
Cucamobit	1

- Most marriages among Mision natives occurred between 1806 to 1808
- Most marriages among Ajuibit occurred in 1775
- Marriages between the same tribes occurred outside the missions- not in our data set

How has the frequency of marriages changed over the early 1800s?

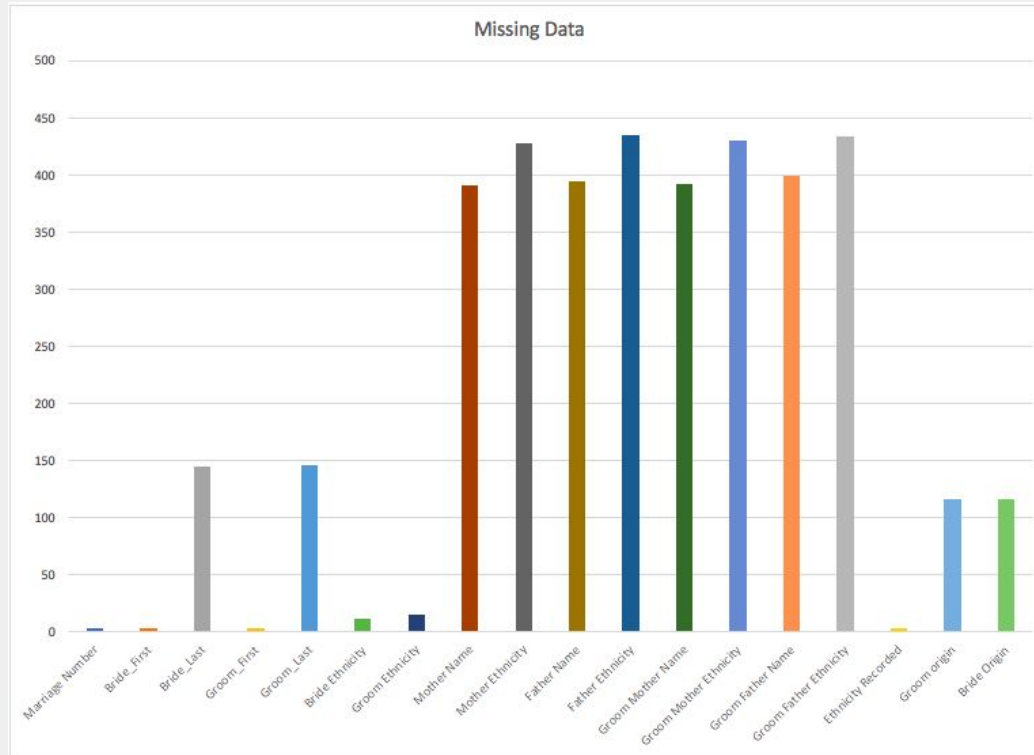
- Downward trend in indigenous marriage frequency
- Very loose correlation: is this insignificant, or can it be explained by historical evidence?



Possible Interpretations and Explanations of Data

- The decline in indigenous marriages could be explained by a decrease in population, an increase in interracial marriages in the mission, or people moving away from the missions as they declined
- One problem with the data is the R-Squared value is .088, meaning that though the model is statistically significant (p value .038), there is essentially no correlation of the data points

What type of data was missing?



Conclusions

- Disease and violence in mission system may have led to decline in the native population
- Decline in population could have lead to the decline in marriages
- Decline in marriages could also indicate why there is a decline in the frequency of the name Maria and in the frequency of all origins except “Mision” and “Mision - esta”
- The re-figuring of identity through inter-marriage could account for lack of origin information
- Future inquiry: Do mixed marriages go up as indigenous marriages go down?

References

Jackson, Robert H. "Appendix 4." in *Indian Population Decline: the Missions of Northwestern New Spain, 1687-1840*. Pp. 172-176. University of New Mexico Press, 1995..

Díaz, Bernal. "From *The True History of the Conquest of New Spain*." from *Victors and Vanquished: Spanish and Nahua views of the Fall of the Mexica Empire*. Ed. Stuart B. Schwartz. Boston: bedford, 2018. Pp. 41-56.

Haas, Lisbeth. *Conquests and Historical Identities in California, 1769-1936*. University of California Press, 2011.

Phillips, George Harwood. *Indians and Intruders in Central California, 1769-1849*. Norman: University of Oklahoma Press, 1993, pp. 65–69.

Manuel de Arellano, *Virgin of Guadalupe*, 1691, oil on canvas, 181.45 x 123.38 cm (Los Angeles County Museum of Art)

Peelo, Sarah. "Baptism among the Salinan Neophytes of Mission San Antonio de Padua: Investigating the Ecological Hypothesis." *Ethnohistory* 4, no. 56 (2009): 589-624. <https://doi.org/10.1215/00141801-2009-023>.

"Title Page" (1632). from Castillo, Bernal Díaz, *La historia verdadera de la conquista de nueva España*.

https://en.wikipedia.org/wiki/Bernal_D%C3%ADaz_del_Castillo#/media/File:Bernal_Diaz_del_Castillo_Historia_verdadera_de_la_conquista_de_la_Nueva_Espa%C3%B1a_1632.jpg (accessed December 12, 2018).

"Tongva People: A Dynamic Study of the Villages and Locations of the Gabrielino-Tongva Indians," *Tongva People.org* http://www.tongvapeople.org/?page_id=696 (accessed December 12, 2018).